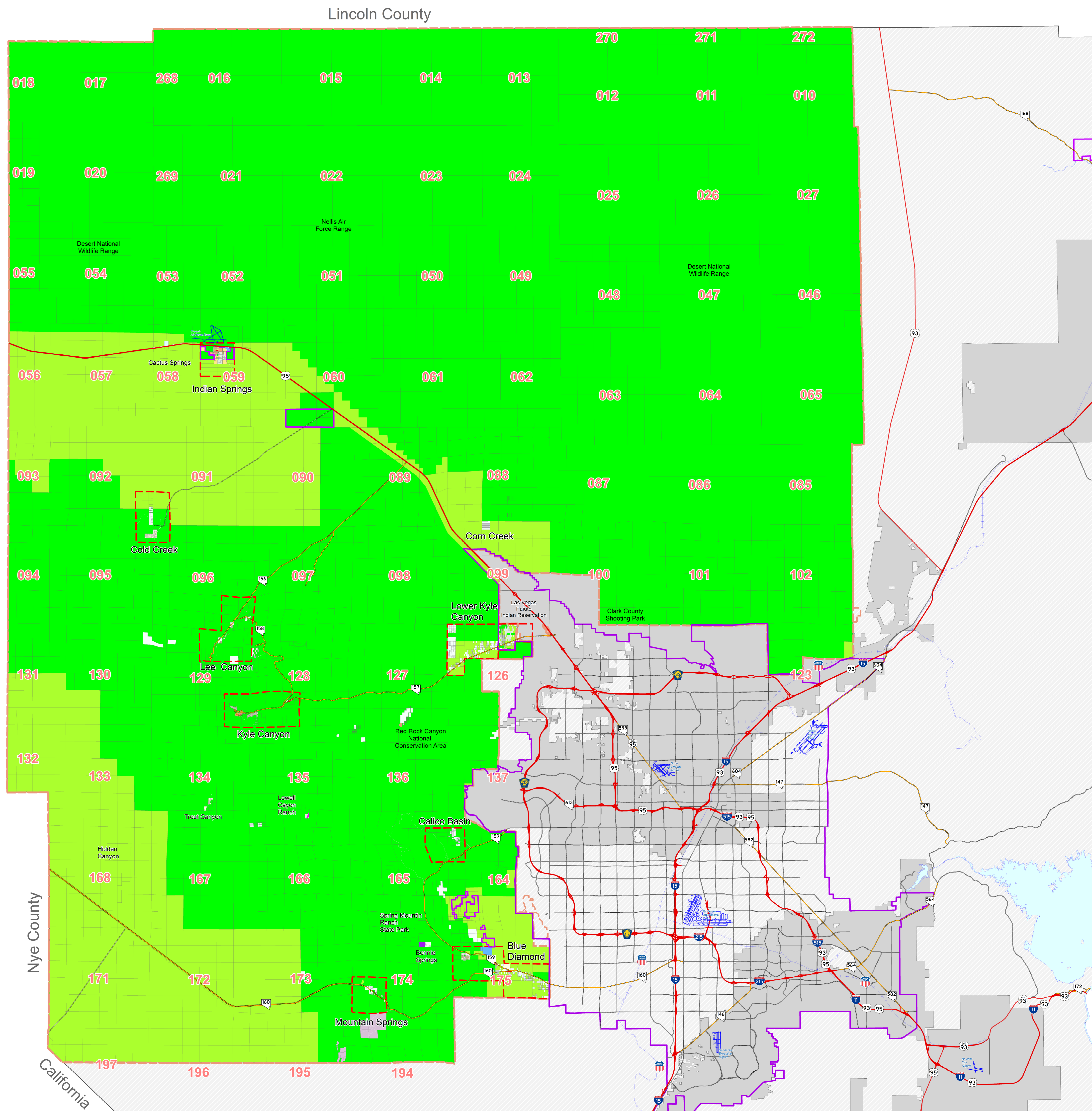


Comprehensive Planning Northwest County Planning Area Planned Land Use

Adopted December 18, 2019

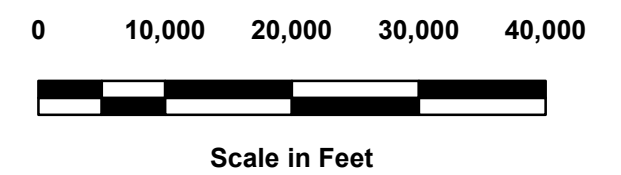
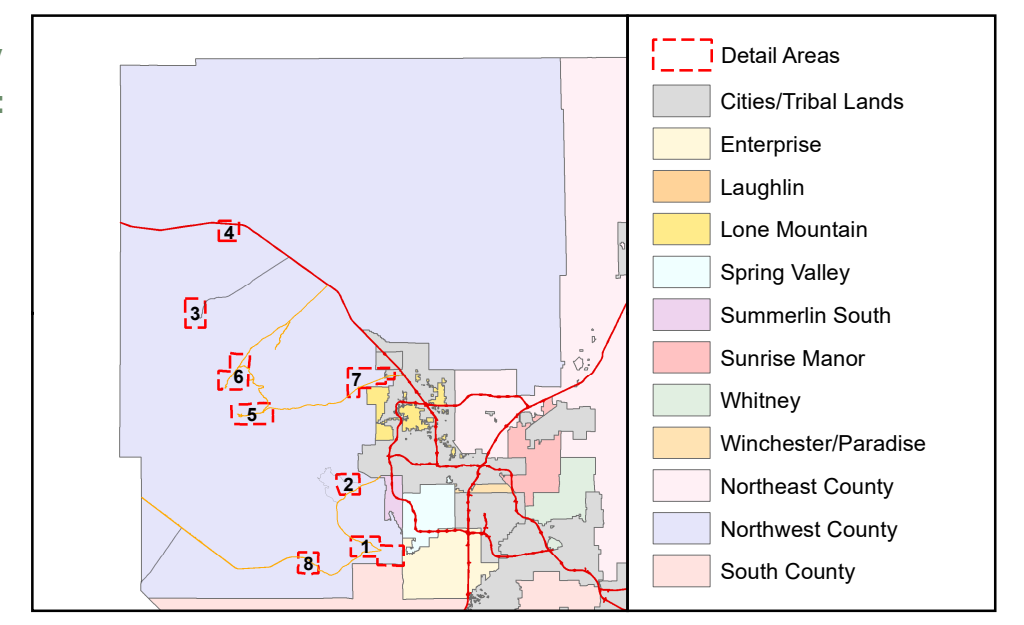


- | | |
|--|---|
| Open Lands | Office Professional |
| Residential Rural
Up to 0.5 du/1 ac | Commercial Neighborhood |
| Residential Agricultural
Up to 1 du/1 ac | Commercial General |
| Rural Neighborhood Preservation
Up to 2 du/1 ac | Commercial Tourist |
| Rural Neighborhood
Up to 2.5 du/1 ac | Business and Design
Research Park |
| Residential Low
Up to 3.5 du/1 ac | Industrial |
| Residential Suburban
Up to 8 du/1 ac | Heavy Industrial |
| Residential Medium
Up to 3 du/1 ac to 14 du/1 ac | Public Facilities |
| Residential High
Up to 8 du/1 ac to 18 du/1 ac | Institutional |
| Residential Urban Center
Up to 18 du/1 ac to 32 du/1 ac | Major Development Projects |
| Residential High Rise Center
Greater than 32 du/1 ac | |
| Detail Areas | Incorporated Cities
and Tribal Lands |
| Planning Area Boundary | Disposal Boundaries |

- | | |
|-------------------------|------------------------------|
| CCSD = School District | L = Library |
| S = School | P = Park |
| E = Elementary | W = Place of Worship |
| M = Middle | SS = Electrical Sub-Station |
| H = High | PW = Public Works |
| G = Government Facility | WD = Water District |
| GC = Golf Course | U = Utility |
| F = Fire Station | PD = Police Department |
| C = Church | SNWA = So. NV Water District |

Maps are available for overall Northwest County and these Detailed Areas:

1. Blue Diamond
2. Calico Basin
3. Cold Creek
4. Indian Springs
5. Kyle Canyon
6. Lee Canyon
7. Lower Kyle Canyon
8. Mountain Springs



Map created on: January 13, 2020

This information is for display purposes only. No liability is assumed as to the accuracy of the data delineated hereon. Categories denoted in the legend may not apply to a particular Planning Area.

